




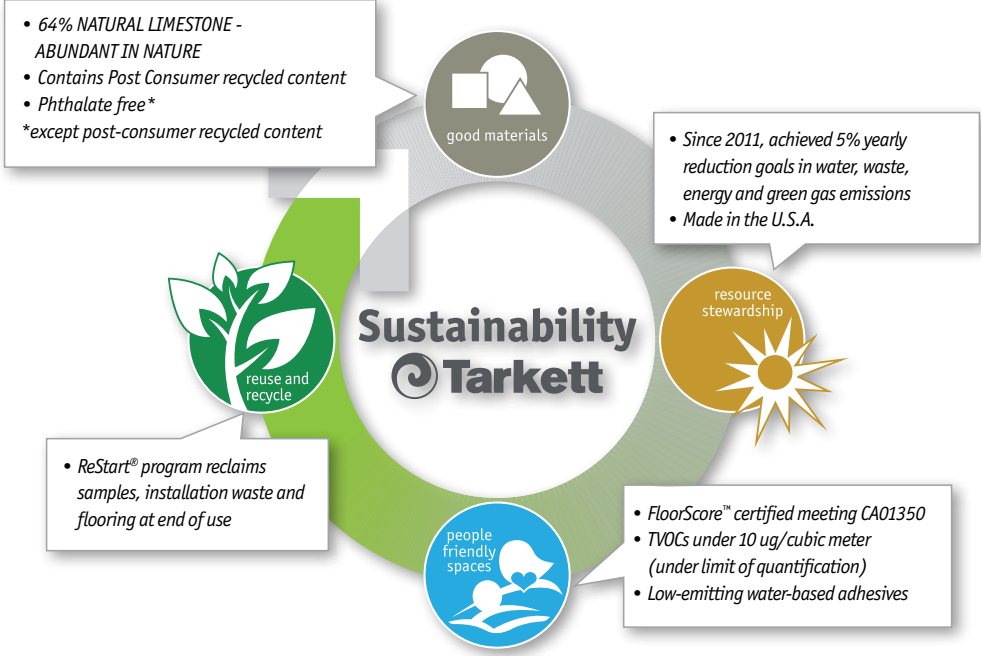


Karim Shapes – SVT

| Technical Data | | Standards | Cortina Grande |
|------------------------|--|-------------------------|---|
| Type of Floor Covering | | Solid Vinyl Tile | |
| Classification | | ASTM F 1700 | Meets Requirements |
| Total Thickness | | | 1/8" (3.2 mm) |
| Static Load Limit | | ASTM F 970 [†] | 800 psi (modified) |
| Square |  Tile Size Weight/sq. ft./m ² Carton Quantity Carton Weight | | 16" x 16" (40.6 cm x 40.6 cm) 1.22 lbs sq. ft. (13.08 lbs. m ²) 25 tiles = 44.44 sq. ft. (4.12 m ²) 54 lbs (24.5 kg) |
| Node |  Tile Size Quantity Weight | | .8 sq. ft. 25 pieces per ctn - 20 sq. ft. (1.86 m2 per ctn) 22 lbs per ctn (9.98 kg) |
| Tri |  Tile Size Quantity Weight | | .75 sq. ft. 25 pieces per ctn - 18.75 sq. ft. (1.74 m2 per ctn) 23 lbs per ctn (10.4 kg) |
| Tide |  Tile Size Quantity Weight | | .8885 sq. ft. 50 pieces per ctn - 44.44 sq. ft. (4.12 m2 per ctn) 54 lbs per ctn (25.0 kg) |
| Hive |  Tile Size Quantity Weight | | 1.1 sq. ft. 25 pieces per ctn - 27.5 sq. ft. (2.55 m2 per ctn) 32 lbs per ctn (14.5 kg) |
| Flammability | | ASTM E 648 | Class 1 > 0.45 CRF |
| Smoke Density | | ASTM E 662 | < 450 |
| Slip Resistance SCOF | | ASTM D 2047 | SCOF ≥ 0.5 - Both smooth and slip resistant (SR) |
| Chemical Resistance | | ASTM F 925 | Good |
| Colors | | | 68 (50 Cortina Grande®, 6 Cortina Grande SR, & 12 GemStone™) |
| Warranty | | | 10 Year LIMITED Warranty. See tarkettna.com for complete warranty information. |
| Maintenance | | | 2 coats of finish/Flexible maintenance depending upon use of the floor* |

* Contact Tech Services for flexible maintenance options.
 † Static load limit per ASTM 970 modified by specifying a higher load.
 Please visit tarkettna.com for the most updated specifications, and installation, cleaning and maintenance instructions.
 The Johnsonite system includes transitions and finishing borders (wall base) to complete your flooring design and installation.

How to Order: Smooth: CG(XXX) Color Number Slip Resistant: CG(XXX) Color Number SR



SPEED SWITCH
800-899-8916

16910 Munn Road
 Chagrin Falls, OH 44023
 800-899-8916 or 440-543-8916

tarkettna.com



THE ULTIMATE FLOORING EXPERIENCE

©2014 Tarkett
 Printed in the USA 6/14

The contents of this document including, but not limited to, all text and images (Content) are owned by Johnsonite Inc. with all rights reserved unless otherwise noted. Any Content that is a trademark, logo, or service mark is also a registered and unregistered trademark of Johnsonite Inc. Your use of any Content without the written permission of Johnsonite Inc. is strictly prohibited.