

Johnsonite®

Replay Interlocking Reducer

Installation Instructions

Introduction

Johnsonite Replay interlocking reducer strips are used exclusively with Johnsonite Replay Interlocking tile. Transitions are 48" in length.

Handling and Storage

Johnsonite Replay Interlocking Reducers must be site conditioned at room temperature for 24 hours prior to, during, and after the installation. **Room temperature must be maintained between 65° and 75°F. (18° and 24°C)**

Johnsonite Resilient Mouldings are not recommended for exterior use. Exposure to excessive UV rays can result in fading and/or color variation.

General Subfloor and Wall Surface Preparations

1. **All subfloors and wall surfaces** must be clean, smooth, and dry. Dust, scale, and loose particles must be removed.

Do not install Johnsonite Resilient Mouldings over expansion joints or in areas where the product will be exposed to animal fats/greases or vegetable oils.

Installation

1. **Estimating Materials Required:** Start by measuring the perimeter of the area requiring reducer and order the proper amount of **RIR-40-A** (Part A) and **RIR-40-B** (Part B) corresponding to the sides A and B of tiles.
2. Starting with Part A (Fig. 1), align the interlocking tabs of the reducer strip to the interlocking tabs of the tile (Fig. 2).
3. Starting with Part B (Fig. 1), align the interlocking tabs of the reducer strip to the interlocking tabs of the tile (Fig. 2).
4. Repeat steps 1 and 2 as necessary to complete installation, make sure that all tabs are flush.

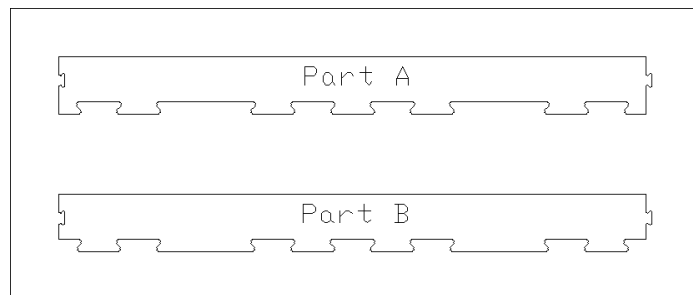


Figure 1

Cutting Corners

1. Overlap the reducer at the corner intersections
2. Using a carpenter square or straight edge create a line from the corner of the tile to the outside overlapped intersection of the reducer strips (Fig. 2).
3. Using a knife following your carpenter square or straight edge as a guide, cut through the top reducer strip.
4. Using the top reducer strip as a guide, trace cut the bottom reducer strip to fit.
5. Using Johnsonite 945 Contact Bond Adhesive, glue the two pieces together by applying the adhesive to the cut side of each reducer.
6. Allow the contact adhesive to dry prior to fitting the pieces together.
7. Wipe any excess adhesive using a damp rag.

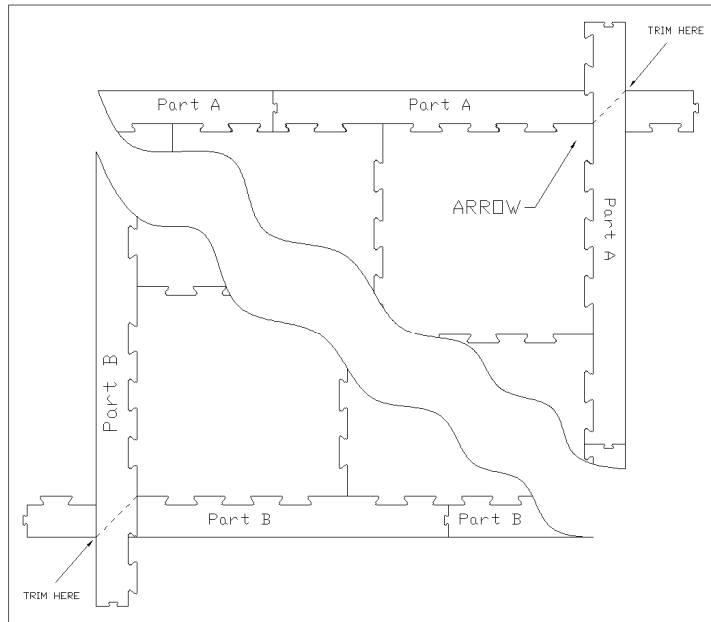


Figure 2

Johnsonite®

Technical Services Department
16910 Munn Road, Chagrin Falls, Ohio 44023
(800) 899-8916 ext 297 Fax (440) 543-8920

www. Johnsonite.com
E-mail: info @ Johnsonite.com

© 2006 Johnsonite, Inc. A Tarkett Company.