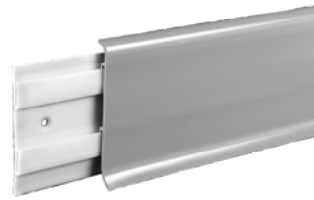


Johnsonite®

rePLACE® Resilient Wall Base System



Installation and Maintenance Instructions

Introduction

The Johnsonite demountable rePLACE Resilient Wall Base System is a patented wall base and mounting track system which mechanically fastens to any suitable wall surface material using screws instead of adhesives; therefore, making it the first totally replaceable, reusable, and recyclable wall base system. It is used where there is need for high move rates, rapid change and environmental restrictions. It also meets the basic interior space needs of design, life-safety, economic return and environmental compatibility.

The rePLACE system is ideal in areas that provide access above the base for adhesive free installation and removal when desired. Any restrictions that prevent the upward or downward movement to install or remove the product are not recommended for the application of rePLACE. Under field conditions that do not allow this access, such as base cabinets with a toe kick or built in shelving, other Johnsonite products are recommended. These include Johnsonite's Traditional Wall Base, Recess, TightLock or Millwork.

The unique wall base and track system utilize ratchet-type interlocking channels to ensure a tight fit while providing adjustability to a variety of flooring surfaces.

The Johnsonite rePLACE Resilient Wall Base System is manufactured with the most advanced technology and from the highest quality resilient materials to assure dimensional stability, precision fit, and uniform height and gauge. Johnsonite's unique finish resists scuffing, gouging, will not fade, discolor, or crack with age and is easy to maintain.

The highest quality of materials and workmanship are employed in the manufacture of Johnsonite rePLACE Resilient Wall Base products and careful inspection is made before shipment. However, a quality installation is the responsibility of the installer and we recommend that all materials be checked for satisfactory color match before you begin installation.

Johnsonite cannot accept any responsibility for loss or damage that may result from the use of this information, due to the possibility of variations of processing or working conditions and/or workmanship outside our control. Users are advised to confirm the suitability of this product by performing their own tests.

Handling and Storage

1. Johnsonite rePLACE Resilient Wall Base and Track must be site conditioned at room temperature for 24 hours prior to, during, and after the installation.
2. **Room temperature must be between 65° and 75° F (18° and 22° C).**
3. Care must be taken not to pull the wall base excessively when removing it from the carton.
4. **The wall base will not shrink, but it will relax to its original length, if stretched.**

Surface Preparation

1. Floors and walls must be clean, dry, and structurally sound.

Never install the Johnsonite rePLACE Resilient Wall Base System on surfaces that will be exposed to drastic temperature changes or moisture.

2. Equipment/Material Requirements

Standard or Sliding Compound Miter Saw, Radial Arm Saw, or Table Saw equipped with a Carbide or Diamond tip blade with 60 teeth or greater.

Variable speed drill

Mounting screws as required for the specific wall surface material

Utility knife

Straight edge

Tape measure

Dividers

¼ inch diameter shaft philips head screw driver

rePLACE Installation

1. Cut the rePLACE Track to the required lengths using a Standard or Sliding Compound Miter Saw, Radial Arm Saw, or Table Saw equipped with a Carbide or Diamond tip blade with 60 teeth or greater.
2. Position the track with the channels facing upward on top of the finished flooring material. Note: If the finished flooring has not been installed, place a piece of material the same thickness as the finished flooring under the track to act as a spacer to ensure proper height and placement of the track.
3. Use flathead coarse thread sheetrock screws to attach the track to sheetrock, plywood, and similar surfaces. Self-taping flathead metal or concrete screws should be used for metal and concrete wall surfaces. (Drilling of pilot holes into the wall surface may be required.)
4. To start the installation, abut the track against an inside corner, doorjamb, or other suitable starting point. On outside and inside corners keep the track back from each side of the corner by approximately one inch.
5. Secure each 4 ft. length of track with 5 screws. One screw on each end of the length approximately one inch in from each end, one in the middle of the section, and one screw approximately 12 inches in from each end of the length.
6. Install the entire track first, then the factory made outside corners and finally the wall base. Cut the rePLACE Wall Base to the required lengths using a Standard or Sliding Compound Miter Saw, Radial Arm Saw, or Table Saw equipped with a Carbide or Diamond tip blade with 60 teeth or greater.

7. To install the wall base, angle the wall base back from the track and partially engage the wall base bottom channel leg into the track bottom channel. (Fig #1) Once the bottom channel leg is partially engaged, flex the base forward until the top clips are engaged. (Fig #2) Press the wall base down until completely engaged into the track channels and the bottom of the wall base is making contact to the flooring material surface. (Fig #3)



Fig #1

Fig #2

Fig #3

Note: Due to shipping and handling, the clips may become pressed closed. It may be necessary to open the clips on the base and on the track to ease the installation. Accomplish this by inserting a ¼ diameter phillips screwdriver, for example, into the clip and drag it down the length of the clip. The clips will return to their original position within minutes.

Note: Due to shipping and handling, the clips may become pressed closed. It may be necessary to open the clips on the base and on the track to ease the installation. Accomplish this by inserting a ¼ diameter phillips screwdriver, for example, into the clip and drag it down the length of the clip. The clips will return to their original position within minutes.

Note: The use of adhesives during installation defeats the purpose of the rePLACE Wall Base “re-placable and re-cyclable” system and therefore are not recommended.

OUTSIDE CORNERS

1. Factory made outside corners are available and must be used for a quality installation and for ease of installation.

Field-Made rePLACE Inside Corners: (Note: Factory made inside corners are not available)

1. Install the wall base on one of the walls and terminate it into the corner.
2. Position a piece of wall base on the opposing wall approximately 1" from the adjacent installed piece.
3. Utilizing the dividers, place the hooked end at the top of the installed piece and the pointer end on the top of the uninstalled piece. Carefully, move the dividers downward in a straight vertical motion, allowing the hooked end of the dividers to follow the profile of the installed piece. At the same time, place adequate pressure on the pointer end to transfer and/or scribe the profile onto the surface of the uninstalled piece.
4. Use a utility knife to cut the pattern on the uninstalled wall base and position the trimmed section into place.

Maintenance

Johnsonite rePLACE Resilient Wall Base is maintained with regular wiping with a soft, wet cloth. A mild soap may be added to the water. An acrylic wax may be applied to increase the gloss level when desired. Coarse scrubbing media or harsh cleaning chemicals may damage the surface of the wall base.

Frequently Asked Questions

Q. How do I know which way is up on the track?

A. The clips point upward.

Q. How far above the floor does the track need to be mounted?

A. The track is rested on the finished floor level. If the finished floor has not been installed, use an appropriate thickness spacer to locate the bottom of the track.

Q. How hard is the system to install?

A. The track was designed to be self locating onto the wall surface by resting it on the finished floor surface. This will align the track with the base. The base requires developing a feel for aligning and fitting the clips together. A little practice is required.

Q. How do I remove the Base from the track?

A. Grip the track at one end and gently lift up and toward yourself to disengage the clips from end to end. Do not force the removal of the base. Care should be taken not to cause damage to the base or the track.

Q. How does the material get recycled?

A. Return any un-needed base to Johnsonite that has not been contaminated with adhesives or paints or other foreign material. Johnsonite can and will recycle this material as well as offer an incentive to the customer for doing so.

Johnsonite®

Technical Services Department
16910 Munn Road, Chagrin Falls, Ohio 44023
(800) 899-8916 ext 297 Fax (440) 543-8920

www.Johnsonite.com
E-mail: info @ Johnsonite.com

© 2006 Johnsonite, Inc. A Tarkett Company.