



Johnsonite®

# I.D. Inspiration™

## LUXURY PLANKS AND TILES

Durability and lifelike design are in I.D. Inspiration's DNA. The newest update to Johnsonite LVT includes 30 colors, 24 plank wood designs from a classically trained European woodworker, and 6 tiles. The 6 tiles feature all-new designs, bringing abstract, stone and woven patterns to the once all-woods collection. The result is a beautiful floor that remains so for years. An advanced engraving technique provides superior attention to detail for graining, texture and color on color.

I.D. Inspiration is ideal for use in commercial areas such as hospitality, retail, corporate, healthcare, education and other commercial environments in need of durable flooring. A flooring solution with an exceptionally hard-wearing reinforced polyurethane surface treatment, and one of the most resistant and durable commercial luxury vinyl tile product on the market.

I.D. Inspiration 70 (28 mil) for Heavy Traffic Areas

- 20-Year Limited Commercial Warranty

I.D. Inspiration 55 (20 mil) for Moderate Traffic Areas

- 10-Year Limited Commercial Warranty



 Tarkett

# I.D. Inspiration™ Planks



ID70: **24201001** ID55: **24231001**  
Antik Oak | *Beige* WB



ID70: **24201003** ID55: **24231003**  
Antik Oak | *Dark Grey* WG



ID70: **24201109** ID55: **24231109**  
Contemporary Oak | *Grey* CB



ID70: **24201007** ID55: **24231007**  
Antik Oak | *Anthracite* WG



ID70: **24201008** ID55: **24231008**  
Antik Oak | *Middle Grey* CB



ID70: **24201111** ID55: **24231111**  
Contemporary Oak | *Natural* WB



ID70: **24201013** ID55: **24231013**  
Brushed Pine | *Brown* WB



ID70: **24201024** ID55: **24231024**  
English Oak | *Beige* CB



ID70: **24201115** ID55: **24231115**  
Elm | *Natural* WB



ID70: **24201025** ID55: **24231025**  
English Oak | *Brown* WB



ID70: **24201029** ID55: **24231029**  
English Oak | *Grey Beige* CB



ID70: **24201122** ID55: **24231122**  
Rustic Oak | *Dark Grey* CB



ID70: **24201092** ID55: **24231092**  
Vintage Teak | *Grey* CB



ID70: **24201093** ID55: **24231093**  
Vintage Teak | *Natural* WB



ID70: **24205009** ID55: **24235009**  
Wenge | *Black* B



## I.D. Inspiration™ Planks



ID70: **24201100** ID55: **24231100**  
Scandinavian Oak | *Light Beige WB*



ID70: **24201108** ID55: **24231108**  
Patina Ash | *Grey WG*



ID70: **24205011** ID55: **24235011**  
Wenge | *Grey CG*



ID70: **24201113** ID55: **24231113**  
Elm | *Light Grey W*



ID70: **24201110** ID55: **24231110**  
Contemporary Oak | *Grege CB*



ID70: **24205012** ID55: **24235012**  
Wenge | *Grege CB*



ID70: **24201128** ID55: **24231128**  
Rustic Oak | *Medium Brown WB*



ID70: **242005010** ID55: **24235010**  
Wenge | *Natural*

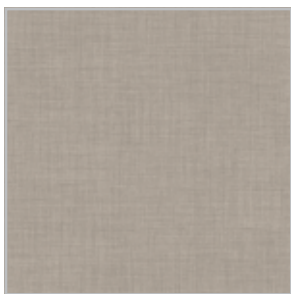


ID70: **24201121** ID55: **24231121**  
Rustic Oak | *Stone Brown*

## I.D. Inspiration™ Tiles



ID70: **24207082** ID55: **24237082**  
Tissé | *Beige CB*



ID70: **24207084** ID55: **24237084**  
Tissé | *Light CB*



ID 70: **24207088** ID55: **24237088**  
Trend Line | *Black B*



ID70: **24207090** ID55: **24237090**  
Trend Line | *Silver CG*



ID70: **24207094** ID55: **24237094**  
Vintage Zinc | *Black B*



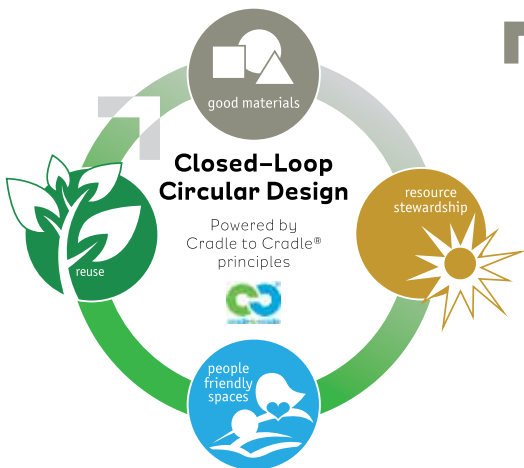
ID70: **24207120** ID55: **24237120**  
Oxide | *Black Steel CG*

# I.D. Inspiration™

Technical Data	Standards	
Type of Floor Covering		Solid Vinyl Tile
Classification	ASTM F1700	Class III Type B
Wear Layer Thickness		ID70: .028" (0.7 mm)   ID55: .022" (0.55 mm)
Polyurethane Reinforced		Yes
Total Thickness	ASTM F386	.098" (2.5 mm)
Static Load Limit	ASTM F970	Passes
Electrostatic Propensity	EN1815	≤ 2kV
Resistance to Heat	ASTM F1514	ΔE ≤ 8.0
Resistance to Light	ASTM F1515	ΔE ≤ 8.0
Slip Resistance	ASTM D2047	SCOF ≥ 0.6
Flame Resistance	ASTM E648	Class 1
Chemical Resistance	ASTM F925	Good
Colors		24 Woods   6 Tiles (Stone, Abstract, Textile)
Planks	Size	ID70: 24201: 7.87" x 48" (20cm x 122cm)   ID55: 24231: 7.87" x 48" (20cm x 122cm)
	Pieces per carton	15
	Size	ID70: 24205: 6.56" x 39.37" (16.66cm x 100cm)   ID55: 24235: 6.56" x 39.37" (16.66cm x 100cm)
	Pieces per carton	22
	Square feet per carton	39.35 ft² (3.66 m²)
Tiles	Size	ID70: 24207: 19.68" x 19.68" (50cm x 50cm)   ID55: 24237: 19.68" x 19.68" (50cm x 50cm)
	Pieces per carton	15
	Square feet per carton	40.34 ft² (3.75 m²)
	Weight	35 lbs. per ctn (15.87 kg)
	Weight	35 lbs. per ctn (15.87 kg)



Please visit [www.tarkettna.com](http://www.tarkettna.com) for the most updated specification, installation, cleaning and maintenance instructions.



## GOOD MATERIALS

- Materials safe for the environment and safe for people
- Contains 32% pre-consumer recycled content

## RESOURCE STEWARDSHIP

- Committed to 3% yearly reduction goals in water, waste and energy and 20% in greenhouse gas emissions by 2020

## PEOPLE FRIENDLY SPACES

- FloorScore® certified meeting CA01350
- Low-emitting adhesives
- TVOCs ≤ 10 µg/m³
- Phthalate-free\*
- **CERTIFIED asthma & allergy friendly™** by the Asthma and Allergy Foundation of America (AAFA) and the Asthma Society of Canada (ASC)

## REUSE:

- ReStart® program reclaims samples, installation waste and flooring at end of use

\*except recycled materials

30000 Aurora Road  
Solon, OH 44139  
800-899-8916 or 440-543-8916

[tarkettna.com](http://tarkettna.com)

**Tarkett**  
THE ULTIMATE FLOORING EXPERIENCE

©2017 Tarkett 06/17